



Total Solution Provider in Saw Device

SA433CK

Remote Control, RF SAW Filter
Revision 0: July 2005



- Electrical Characteristics
 - Package Dimensions
 - Testing Environment
 - Frequency Characteristics
-

SAWNICS Inc.

460 Cheonheung-ri, Seonggeo-eup, Cheonan-si, Chungcheongnam-do, 330-836 / Korea.
Tel: +82 41 550 9372 / Fax: +82 41 550 9399 / www.sawnics.com

□ Electrical Characteristics

Maximum Ratings

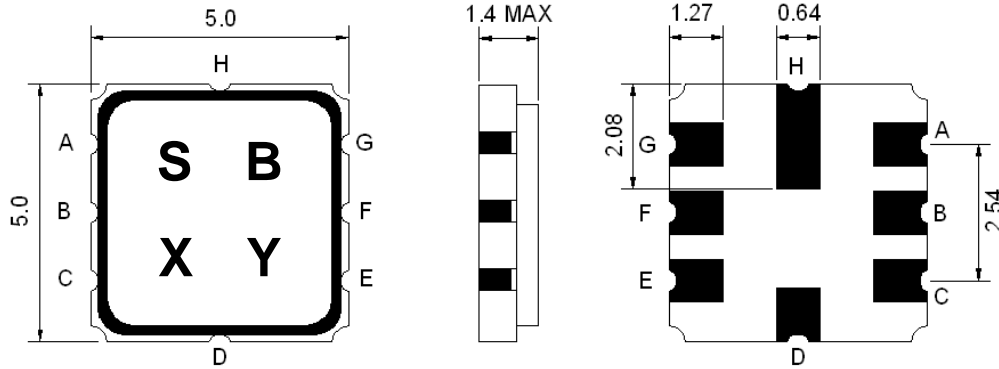
Parameters Description	Unit	Minimum	Typical	Maximum
Operating Temperature Range	°C	-45	-	+120
Storage Temperature Range	°C	-40	-	+85
Maximum DC Voltage	V	-	-	0
Maximum Input Power	dBm	-	-	10
Source Impedance (single ended) ⁽¹⁾	Ω	-	50	-
Load Impedance (single ended) ⁽¹⁾	Ω	-	50	-
Package type & size	K			
Length x Width	mm ²	-	5.0 x 5.0	-
Height	mm	-	-	1.4

Electrical Specification

Parameters Description	Unit	Minimum	Typical	Maximum
Center Frequency (Fo)	MHz	-	433.92	-
Insertion Loss within 433.8 ~ 434.12 MHz	dB	-	2.2	4.0
Relative Passband	-	-	-	-
433.76 ~ 434.08 MHz	dB	-	-	2.0
433.74 ~ 434.10 MHz	dB	-	-	3.0
433.68 ~ 434.16 MHz	dB	-	-	6.0
Relative Pass bandwidth (BW ₃)	KHz	670	720	-
Attenuation				
10.0 ~ 414.0 MHz	dB	45	48	-
414.0 ~ 428.0 MHz	dB	40	43	-
428.0 ~ 432.92 MHz	dB	15	19	-
434.92 ~ 442.0 MHz	dB	10	14	-
442.0 ~ 550.0 MHz	dB	35	38	-
550.0 ~ 1000.0 MHz	dB	45	50	-
Turnover To	deg.C	-	25	-

Notes : (1) With Matching Network .

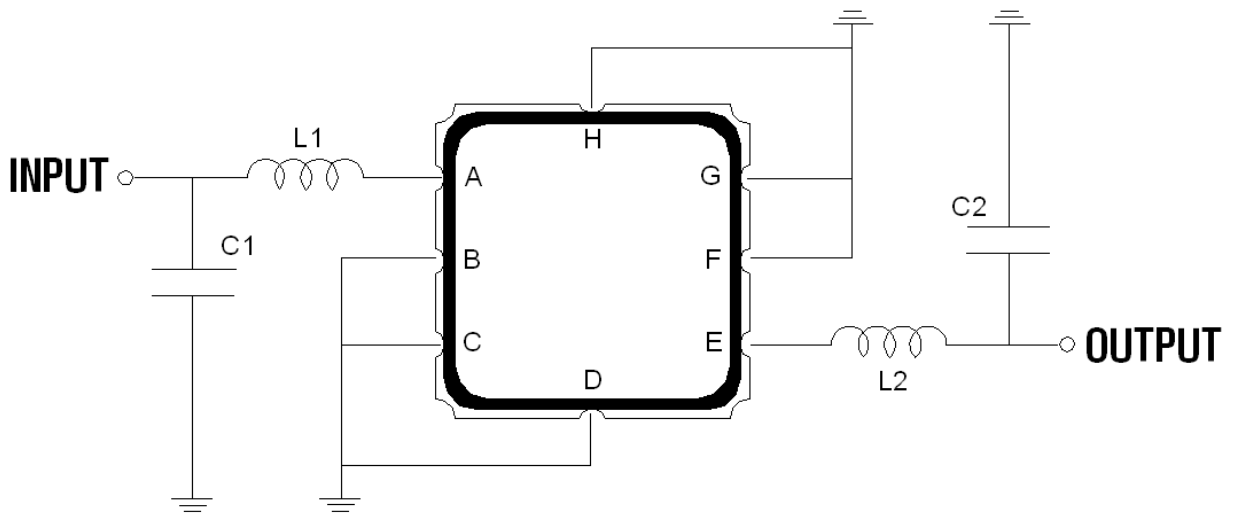
□ Package Dimensions



Marking Descriptions	
S	TCRF Application
B	Series Number
X	Date Code(Year)
Y	Date Code(Month)

Pin Description	
B, C, D, F, G, H	Ground
A	In
E	Out

□ Testing Environment



L1=39nH , L2=39nH
 C1=3.0pF , C2=3.0pF

□ Frequency Characteristics

Frequency Response

